



Safety and Environmental Newsletter

January 2022 — 117th Edition

WINTER WEATHER PRECAUTIONS

One of the most critical things when it comes to cold weather is ensuring that those who work outside regularly, are familiar with the hazards. In this case, we mean the signs of hypothermia and the signs of frostbite in themselves as well as their colleagues. Cold stress is another frequently seen issue, which can affect anyone who is in a cold and windy environment.

Risk factors include:

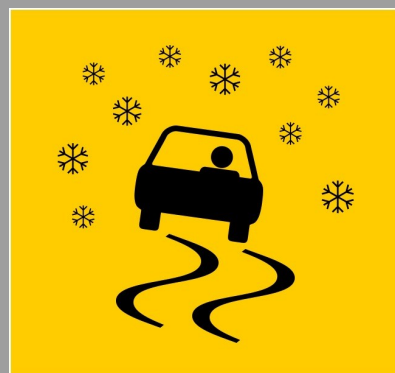
- ◆ *Being wet and/ or cold for extended periods of time*
- ◆ *A cold body temperature*
- ◆ *Lack of effective Personal Protective Equipment (PPE)*
- ◆ *Underlying health conditions*



WINTER DRIVING

The month of January brings a range of added risks, and winter driving is one of the areas where accidents can easily happen. The three P's of safe winter driving are Prepare, Protect and Prevent. All drivers should have the following available in their emergency kits:

- ◆ *Blankets, gloves and a hat*
- ◆ *Water and snacks*
- ◆ *Emergency flares*
- ◆ *Jumper cables and a tow chain*
- ◆ *A flashlight and batteries*
- ◆ *A snowbrush, ice scraper and shovel*
- ◆ *An emergency cell phone or radio*





Safety and Environmental Newsletter

January 2022 — 117th Edition

NASA and the National Environmental Policy Act

NEPA Training for Projects Conducted On and Off WFF

SATERN Course HQ-NEPA-101 “NATIONAL ENVIRONMENTAL POLICY ACT: Overview for NASA Program and Project Managers” is designed to facilitate a general understanding of how to integrate environmental review and compliance into program, project or facilities planning and decision making processes. Through NEPA, Congress created a process for Federal agencies, such as NASA, to meet environmental stewardship responsibilities while carrying out their primary missions.

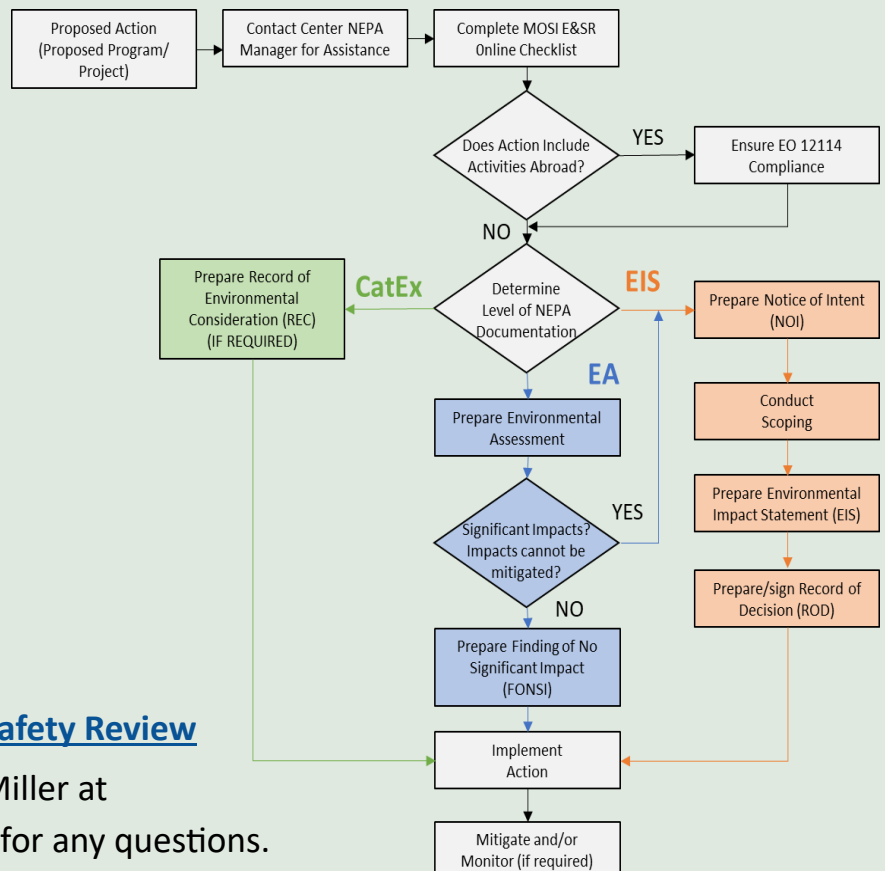
Federal actions are defined as “projects and programs entirely or partly financed, assisted, conducted, regulated, or approved by Federal agencies; new or revised agency rules, regulations, plans, policies, or procedures; and legislative proposals.”

The steps proceed in the following sequence:

1. Proposal of an Action
2. Development of Alternatives
3. Public Scoping
4. Description of Current Environment
5. Analysis of Environmental Impacts
6. Public Comment
7. Issuance of a Decision
8. Implementation of Action
9. Implementation of Mitigation

Submit a project for Environmental and Safety Review

Contact the Center NEPA Manager, Shari Miller at Shari.A.Miller@nasa.gov or 757.824.2327 for any questions.





Safety and Environmental Newsletter

January 2022 — 117th Edition

When a Waste Stream or Process Changes

All WFF hazardous waste generators are required to notify the WFF Environmental Office when a waste stream or process using a hazardous material changes. Recently a work area contacted the WFF Environmental Office for waste containers to dispose of their cleaner used to clean lab equipment. The work area notified the WFF Environmental Office they were using a new safer cleaner which created a non-hazardous waste in place of the previously used corrosive cleaner which had created a hazardous waste. That crucial critical information allowed the WFF Environmental Office to correctly dispose of the waste in compliance with the Code of Federal Regulations (CFR). Notification is even more important when generators switch from a non-hazardous material to a hazardous material that:

- Exhibits any of the characteristics specified by EPA regulations as hazardous (ignitable, corrosive, reactive, toxic) or
- It is specifically listed as a hazardous waste in EPA regulations (40 CFR 261.31)

When waste generators are ready to schedule a waste pickup, they can generate a MOSI ticket, or call the Hazardous Waste Hotline at extension 1718 (757-824-1718) and complete a Hazardous Waste Disposal Inventory Form found at <https://code200-external.gsfc.nasa.gov/250-WFF/forms> Completed forms can be emailed to jonathan.s.wheaton@nasa.gov or marianne.f.simko@nasa.gov or attached to the MOSI ticket. It is essential to completely describe the waste to include all contaminants which may be in the waste and to completely describe the waste generating process.

Additional training is available on SATERN listed as course GSFC-RCRA AND ICP ANNUAL TRAINING (WFF)

Hazardous Waste Disposal Inventory Form

Be complete when filling out this form prior to a pick-up. See specific hints below for the process, *Degreasing lead sheet metal with an acetone rag. Waste is stored in a 5-gallon pail.*

Hazardous Waste Disposal Inventory/Greenbelt/Wallops

1. Generator Information
Enter your information

2. Waste Description
Completely describe the waste. Enter *Acetone rag with lead*

3. Generating Process
Enter *Degreasing lead sheet metal*

4. Containers
Enter *1, 5G, pail*

5. Waste Trait
Enter *F, T*
Acetone is toxic and flammable. Lead is toxic

6. State Check
Solid

7. Generator Comments
Check *Yes* for attending this training

8. Generating Certification
You are certifying that all the information above is correct. *Check, Print Name and Sign*

WASTE DESCRIPTION		WASTE ID OR CONTAINER #	GENERATING PROCESS	CONTAINERS			STATE	WASTE TRAIT
Describe material to be collected by its specific chemical constituents or by code name		Provided by the Environmental Office	Describe the work process that made the waste, e.g., expired shelf life, cleaned, paint brushes	Type — Describe type, e.g., drums, plastic bottle, sealed bucket, etc.	No.	Size	Gas (Liquid) Solid	Insert appropriate code
1.								CA - Corrosive
2.								CB - Corrosive (Batteries)
3.								F - Flammable (Flammable <140°F)
4.								MX - Non-Hazardous
5.								OX - Oxidizing
6.								Px - Peroxidizable
7.								R - Reactive (air or other sensitive)
8.								T - Toxic
9.								Other (Specify)
10.								

Generator Comments

Received Resource Conservation and Recovery Act (RCRA) generator training within the last 12 months? Yes ☐ No ☐

Did you make a good faith effort to minimize your waste generation by considering substitutes or alternatives? Yes ☐ No ☐

Comments - Indicate special requirements (if any) for collection of the waste material, e.g., restricted access to an area, appointment, generator monitor collection, etc.

Generator Certification

☐ I hereby declare that the contents of this inventory are fully and accurately stated as described by their waste, process, and container.

Printed Name: _____ Signature: _____

Date Received: _____

At Greenbelt, when received by: _____

At Wallops, when received by: _____

GSFC Form 25-54 (Feb 2018)