



Safety and Environmental Newsletter

March 2022 — 119th Edition

Here Are Some Important Ladder Safety Do's and Don'ts:

- **DO** ensure the ladder is in proper working order and follow your center's ladder inspection requirements.
- **DON'T** use aluminum ladders around energized equipment or other electrical hazards.
- **DO** wait until bad weather passes before using ladders outside.
- **DON'T** use extension ladders in windy or inclement weather.
- **DO** make sure you're feeling up to the task of climbing a ladder.
- **DON'T** use a ladder if you feel dizzy, have an injury or are prone to losing your balance.
- **DO** use the buddy system. The ladder "spotter" should stand in front of the ladder holding the side rails.
- **DON'T** use a ladder by yourself.
- **DO** place the ladder on a firm, level, stable and clean surface. If needed, block off the area where the ladder is set up to stay clear of doorways or pedestrian traffic.
- **DON'T** place a ladder on another base, such as a table, to gain additional height.
- **DO** ensure the ladder can support the intended load.
- **DON'T** use the top of the ladder or the rung just below as a step. Don't stand higher than the third rung from the top of the ladder.



Use the buddy system



Face the ladder while climbing it

Watch out for electrical and overhead hazards

Wear the right gear and Personal Protective Equipment

Use a towline or bucket and pulley system to transfer tools

Climb one rung at a time using three points of contact

Observe all ladder safety information labels

Ensure locks are fully engaged

Ensure proper lighting



Place the ladder on a firm, level, stable and clean surface



Safety and Environmental Newsletter

March 2022 — 119th Edition

WHAT'S IS BIOPREFERRED® ?

BioPreferred®

Managed by the U.S. Department of Agriculture (USDA), the goal of the BioPreferred Program is to increase the purchase and use of biobased products. The BioPreferred Program was created by the 2002 Farm Bill and reauthorized and expanded as part of the Agriculture Improvement Act of 2018 (2018 Farm Bill). The two major parts of the Program are:

- mandatory purchasing requirements for federal agencies and their contractors; and,
- a voluntary labeling initiative for biobased products.

What Are Biobased Products?

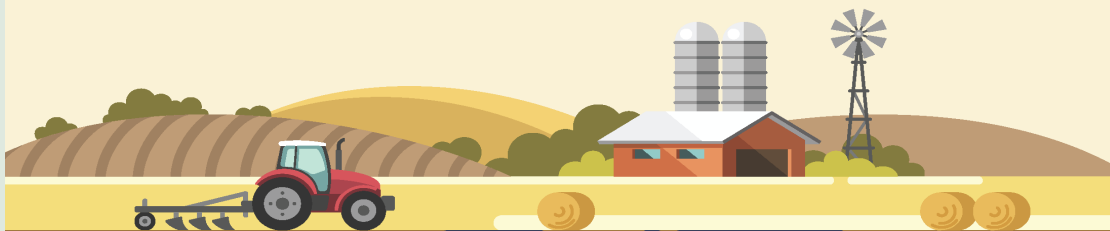
The term "biobased product" means a product determined by the Secretary to be a commercial or industrial product (other than food or feed) that is- (A) composed, in whole or in significant part, of biological products, or (B) an intermediate ingredient or feedstock. Biobased Products are derived from raw materials such as plants and other renewable agricultural, marine, and forestry materials.

Where can you find more information and training?

Visit <https://www.biopreferred.gov>



How Many Raw Materials Are Used to Make USDA Certified Biobased Products?



From acacia and aloe to witch hazel and yams, there are more than 500 different types of raw materials across 6000+ USDA Certified Biobased Products.

Common materials include corn, sugarcane, soybeans, wheat, and rice. Many biobased products do not use the same agriculture products intended for food, but rather other parts of the plant that remain after harvesting, like stalks, straw, husks, and chaff.

Wheat is a prime example of how an entire plant can benefit people and the planet. In addition to the grain being a key ingredient in breads, cereals, and flour, the fibrous parts of the wheat plant are used to make disposable biobased food containers to replace plastic ones. You'll also find wheat in toothbrush handles, straws, socks, pillows, paints, cosmetics, and baby lotions.

What's in the biobased products you buy?



Sugar Beets

Sugar beet residue makes a robust, flexible and water-tight bioplastic, ideal for replacing oil-based polyethylene terephthalate (PET) bottles.

Algae is used to make cushiony foams in shoes.

64 products listed in the BioPreferred Program Catalog are made of **seaweed and kelp**: shampoos,



Algae



Seaweed/
Kelp

conditioners, hand soaps, sunscreen, fertilizers, compost tea, paper, toothpaste, and all-purpose cleaners.

Soybean oil is in interior and primer paints, dust removers, bike grease, laundry detergents, and rust removers.

The reengineering of **cotton seeds** to require less water for growing, along with innovations in planting and



Soy



Cotton

harvesting, mean cotton now qualifies as an innovative raw material for biobased products.

Innovators also use **switchgrass, guar, neem seeds, avocado pits, and food processing scraps, like apple and potato peels.**

Even biosolids, compost, and food scraps are being repurposed for good!



Walnut shells, crab shells, and more!

Many powerful industrial products are made from biobased ingredients.

Chevron Havoline® PRO-RS™ Renewable Full Synthetic Motor Oil is a line of products made with 25% sustainably sourced plant-based oils. Chevron's innovative proprietary process develops high-performance synthetic lubricants, utilizing renewable plant-based feedstocks that do not have the impurities found in traditional oils derived from crude petroleum.

Seam Seal™ Longitudinal Asphalt Seam Sealer is a soy-based pavement crack sealant that's 83% biobased and designed to prevent moisture penetration into pavement seams.

What are the products that you buy made of? Find biobased options in the BioPreferred Program Catalog.

