

National Aeronautics and
Space Administration

**Goddard Space Flight Center
Wallops Flight Facility
Wallops Island, VA 23337**



Reply to Attn of: 228

December 18, 2012

Ms. Anne Buck McKay
Accohannock Indian Tribe
427 Loblolly Lane
Salisbury, MD 21801-6851

RE: Notification of intent to develop a Programmatic Agreement for the management of cultural resources at NASA Wallops Flight Facility, Wallops Island, Accomack County, VA.

Dear Ms. McKay,

The National Aeronautics and Space Administration (NASA) Wallops Flight Facility (WFF) is a 6,200-acre facility located on Virginia's Eastern Shore at Wallops Island, Accomack County, Virginia. WFF is NASA's principal facility for suborbital research programs. Federal laws and regulations, principally Sections 106 and 110 of the National Historic Preservation Act of 1966, require federal agencies such as NASA to identify and manage cultural resources under their jurisdictions. Cultural Resources may include buildings, historic or prehistoric archaeological sites, graves or cemeteries, or sites associated with the traditional beliefs and practices of a Native American group. In accordance with 36 CFR 800.14, NASA plans to develop a Programmatic Agreement (PA) for routine management activities and other undertakings at WFF.

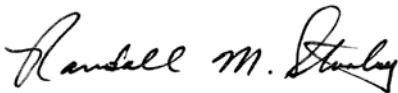
The proposed WFF PA document will outline how the facility will manage its cultural resources as an integral part its operations and missions. NASA, the Virginia State Historic Preservation Officer and the Advisory Council on Historic Preservation will develop the PA and sign the final document. As part of this process, NASA is required to identify parties or individuals who may have an interest in, or knowledge of, cultural resources at WFF. Parties with an interest in cultural resources may choose to be consulting parties and participate in the development of the terms of the PA. Please accept this letter as an invitation to contact us with information, questions or concerns about cultural resources at WFF, or the PA process or contents.

Over the years, several studies have been conducted identifying and evaluating cultural resources at WFF. Attached to this letter are maps marked with the locations of the Main Base and Wallops Island areas of WFF, as well as the Coast Guard Station and Observation Tower. Below is a table of the known archaeological and architectural resources at WFF. Please note that in order to protect fragile archaeological sites, only general location information is included in the table.

VDHR Site #	Name/Type	Culture Period	Location	National Register Status
44AC0089	Military earthworks	Revolutionary or Civil War	Wallops Island	Eligible
44AC0103	Matthews House and cemetery	Ca. 1788	Main Base	Not evaluated
44AC0159	Shell pile	Unknown historic	Wallops Island	Not evaluated
44AC0405	Artifact scatter	19 th century	Main Base	Recommended not eligible
44AC0437	Artifact scatter	18 th & 19 th centuries	Main Base	Recommended not eligible
44AC0459	US Coast Guard Station trash scatter	19 th & 20 th century	Wallops Island	Recommended not eligible
44AC0556	Trash pit	Late Woodland	Main Base	Determined not eligible
	Single grave	19 th century	Main Base	Determined not eligible
44AC0558	Temporary camp	Possibly Middle Archaic; Woodland; Historic	Wallops Mainland	Recommended Potentially Eligible
44AC0562	Artifact Scatter	18 th & 19 th centuries	Wallops Mainland	Recommended not eligible
44AC0563	Artifact Scatter	18 th & 19 th centuries	Wallops Mainland	Recommended not eligible
001-0027-0100	Wallops Coast Guard Station	1936-1947	Wallops Island	Eligible
001-0027-0101	Coast Guard Observation Tower	1936-1947	Wallops Island	Eligible

If you have any questions or concerns about the PA process, or if you would like to participate in the development of the document, please contact either myself at (757) 824-1309 or Randall.M.Stanley@nasa.gov, or Ms. Shari Silbert at (757) 824- 2327 or Shari.A.Silbert@nasa.gov. Additionally, please let us know if you are aware of known or possible cultural resources at WFF that are not included in the table above. We look forward to hearing from you.

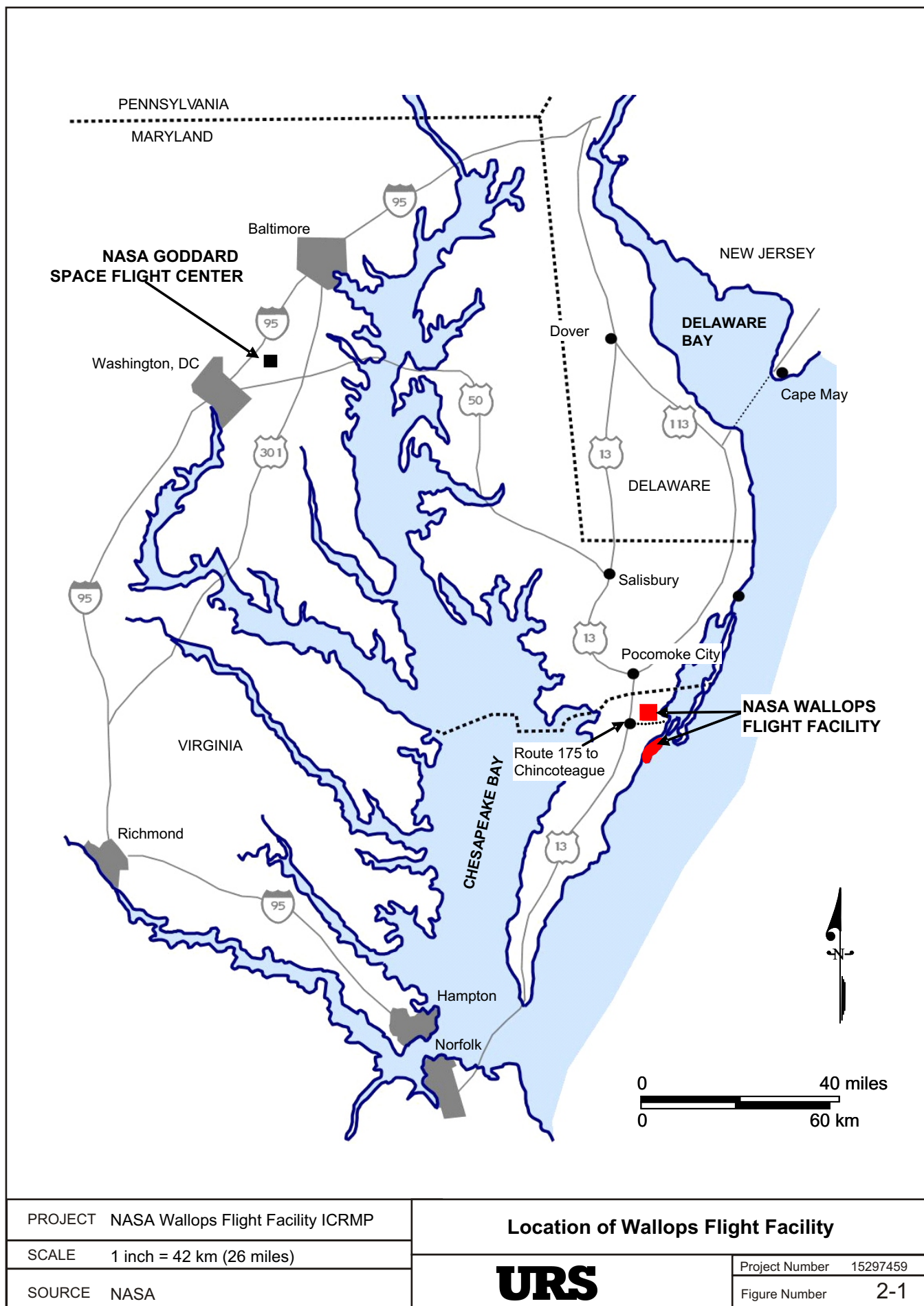
Sincerely,

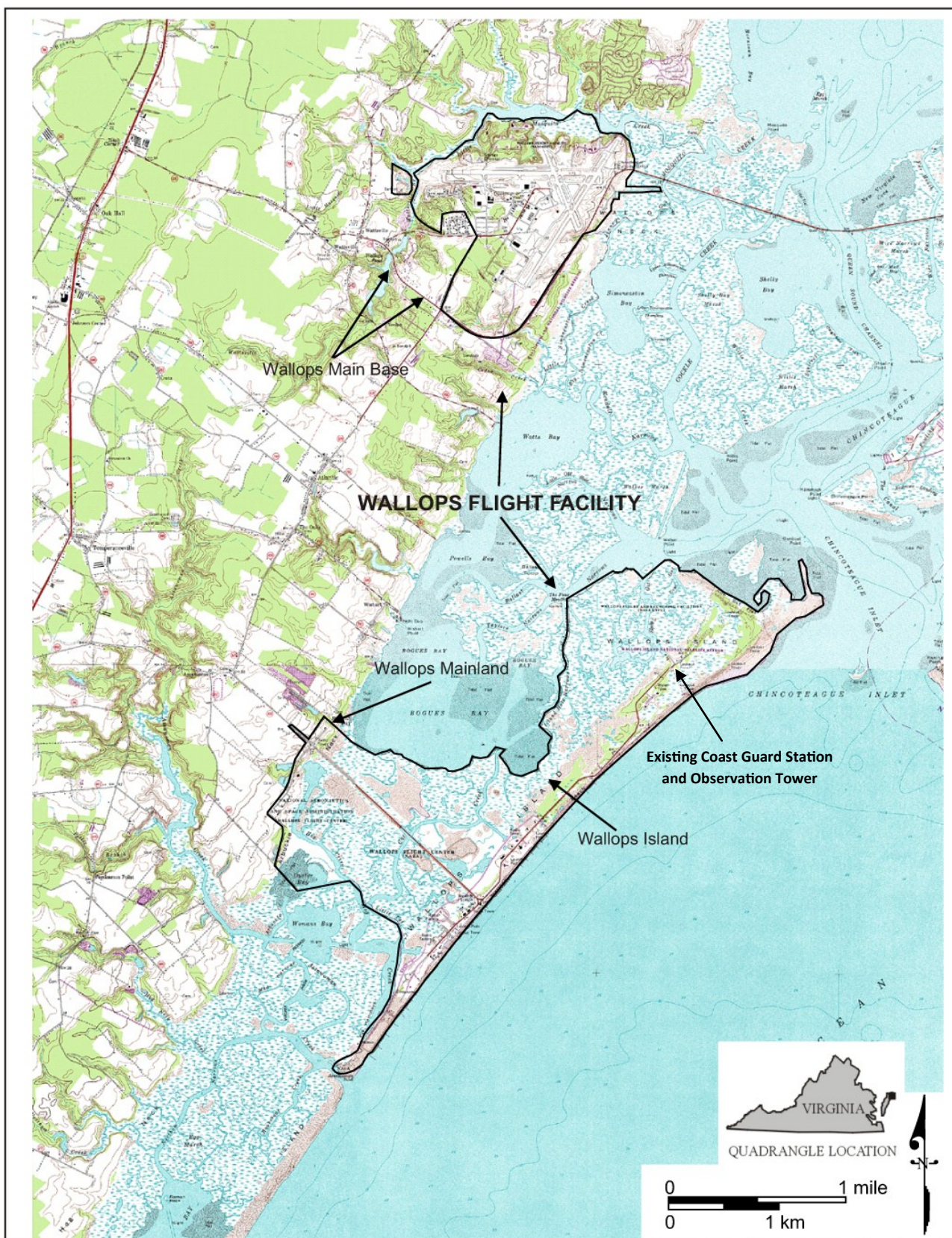


Randall M. Stanley
Facility Historic Preservation Officer

Enclosures:

1. (2) Maps





PROJECT NASA Wallops Flight Facility ICRMP		Wallops Flight Facility	
SCALE	1 inch = 1.2 km (0.77 miles)	URS	Project Number 15297459
SOURCE	USGS 7.5' Quadrangle Maps: Bloxom, 1968, photorevised 1979; Chincoteague West, 1965, photorevised 1986; Wallops Island, 1965, photorevised 1980		Figure Number 2-2