

GSFC Environmental and Safety Review (E&SR) Process

The E&SR process should be initiated **early** in the planning stages of a project.

Objective

- Provide background and requirements for Goddard organizations to initiate the GSFC Environmental and Safety Review Process.
- Introduce the new GSFC E&SR Process developed to streamline the existing process:
<https://mosi.ndc.nasa.gov/EnvironmentalSafetyReview/index.xhtml>

NASA Project Management Requirements

- All projects and programs that could affect the environment or safety, including mission and institutional, require review through the system and must be initiated by the Project or Program Manager:
 - NPR 8580.1 indicates who is responsible, and it is, for all intents and purposes, you.
 - NPR 7120.5, NASA Program and Project Management Processes and Requirements
 - NPR 7120.8, NASA Research and Technology Program and Project Management Requirements
 - NPR 8820.2, Facility Project Implementation Guide.

Goddard Project Management Requirements

- GSFC has responsibility to assess facilities, programs, projects, and activities for potential environmental and safety impacts.
 - GPR 8500.1, *Environmental Planning and Impact Assessment*, specifies procedures and responsibilities to provide environmental planning and ensure compliance with NEPA and other environmental requirements.
 - OSHA regulations require organizations to assess their workplaces including changes to facilities, projects, and activities for hazards and ensure appropriate institutional safety controls are in place to protect personnel.
 - GPR 7320.1, *Facility Safety Management Process*, specifies procedures and responsibilities to review hazards and ensure safety requirements are included throughout the facility's life cycle.

Goddard Project Management Implementation

- Both GPRs required GSFC organizations to complete forms (e.g., 23-73) to initiate the environmental and safety review process outlined in the GPRs above. This process was in existence for many years.
- The checklist engages Code 250 and 390 personnel to help the organization ensure environmental and institutional safety requirements are met.
- A process improvement was completed transitioning the paper forms into an electronic form in the MOSI system with automatic workflows.
 - Previous processes were very manual and required routing of information to properly coordinate with Codes 250 and 390.
 - New system provides automatic workflow distributed to required participants based on responses on the electronic form.

What types of projects/activities require E&SR?

- The E&SR process must **be initiated for**:
 - **Facility projects** including acquisition, design, construction, activation, operation, maintenance, renovation/modification, disposal/demolition, and installation of facilities, equipment, or processes (e.g., office build out, new clean tent, dig permits);
 - Any **new or changes in existing projects**, activities, or processes that have environmental or safety impacts (e.g., new process using toxic chemicals, new equipment);
 - **Onsite or offsite projects** or activities (e.g., airborne deployment in Arctic, sounding rocket launches at WFF, GPM);
 - **Acquisition** of property or leases (e.g., lease for new antenna site).
 - **Mission projects** (e.g., rocket launch, DoD customer actions, balloon, aircraft, flight/spacecraft)
- **What is excluded**:
 - Routine work that is performed using established processes with safety and environmental controls in place (e.g., **ongoing O&M** activities);
 - **Minor modifications** that have low potential environmental or safety impact (e.g., painting office, replacing ceiling tile);
 - **Administrative activities**, software development, etc. that have low potential for environmental or safety impacts.

How to get to MOSI E&SR to submit a project

<https://mosi.ndc.nasa.gov/>

MOSI 
Management Operations Services and Information

This U.S. Government computer is for authorized users only. By accessing this system you are consenting to complete monitoring with no expectation of privacy. Unauthorized access or use may subject you to disciplinary action and criminal prosecution.

**SUBMIT, APPROVE,
OR VIEW SERVICES**

CLICK HERE



Continue to Applications

[Submit suggestions, comments, concerns, or kudos](#)
[Download MOSI training](#)

[GSFC Environmental & Safety Project Review System](#)

Continue to report Emergency & Trouble Calls to: **Greenbelt x6-5555 Wallops x7-4357**

- | | | | |
|---|---------------------------|-------------------------|--------------------------|
| • Room temperature (too hot/cold) | • Electrical/power issues | • Fallen trees/limbs | • Exhaust fan issues |
| • Repair bathroom fixtures/accessories | • Light issues | • Fencing repairs | • Strange odor or noises |
| • Leaks/clogs (and other plumbing issues) | • Alarms | • Pot holes in road | • Humidity issues |
| • Door/door hardware issues | • Elevator issues | • Trash or Recycle bins | • Tripping hazards |

How to get to MOSI E&SR to submit a project

<https://mosi.ndc.nasa.gov/EnvironmentalSafetyReview/>



Submit New Project

Role Management

Home

My Projects

Greenbelt

Wallops

Search

General

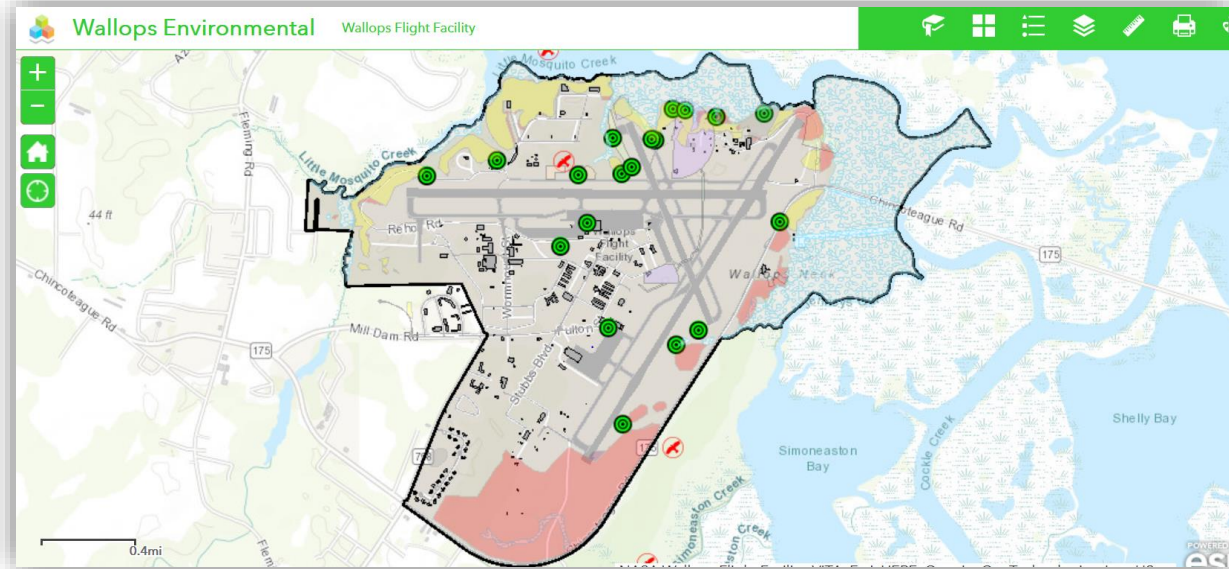
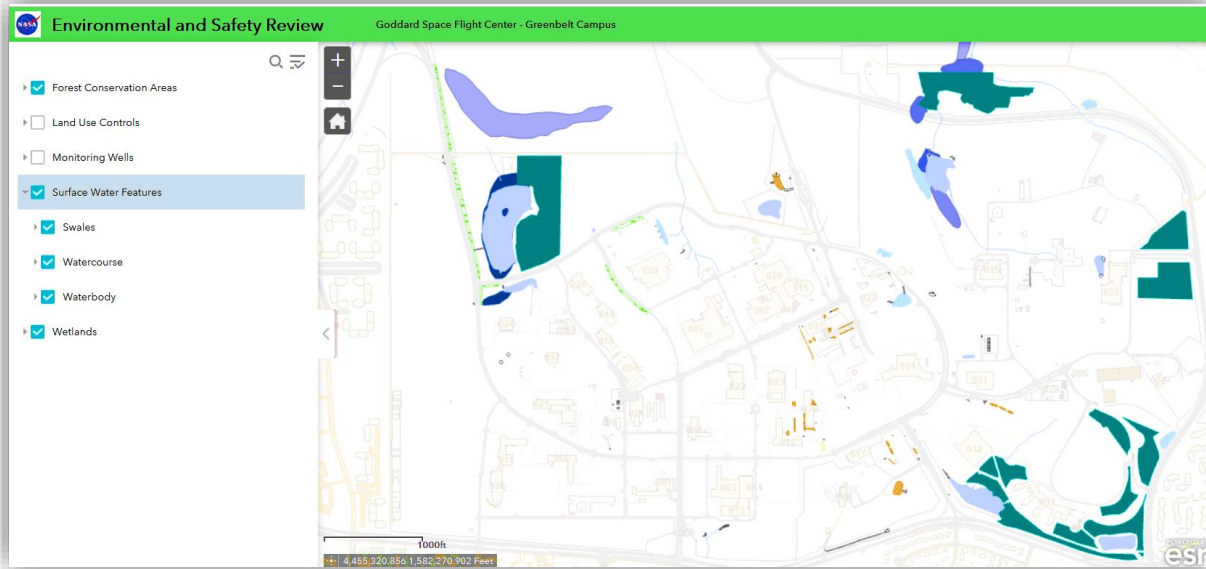
Welcome to the GSFC Environmental & Safety Project Review System. This web application will walk you through gathering the data needed for the GSFC Environmental & Safety Office to review your proposed project and ensure compliance with multiple environmental and safety regulations. After submission, you will be able to access your submittal to view comments and the status. You will be notified via email once the review is complete.

Training

The GSFC Environmental & Safety Office is happy to provide training in the use of this web application. Please do not hesitate to contact Lizabeth Montgomery (301.286.0469) and Michelle Leimbach (301.286.0340) at Greenbelt and Shari Miller (757.824.2327) or Greg Cusimano (757.824.1384) at Wallops.

GIS Tool

The on-line E&SR contains links to GIS maps (for both GB and WFF) that identify sensitive areas, such as wetlands, cultural resource areas, and land use control areas.



MOSI Environmental and Safety Review

Any Questions or request for training?

For more information contact:

Wallops

Shari Miller, 7-2327, shari.a.miller@nasa.gov

Greg Cusimano. 7-2156, greg.w.cusimano@nasa.gov

Andrew Cox, 7-2290, andrew.l.cox@nasa.gov

Greenbelt

Irene Romero, 6-8644, irene.j.romero@nasa.gov

Ken Yargus, 6-0518, kendall.a.yargus@nasa.gov

Michelle Leimbach, 6-0340, michelle.l.leimbach@nasa.gov