

Safety & Environmental Newsletter

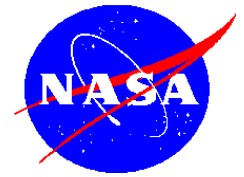


CHART A COURSE FOR SAFETY

3rd Issue

March 19, 2010

2010 Safety Awareness Campaign



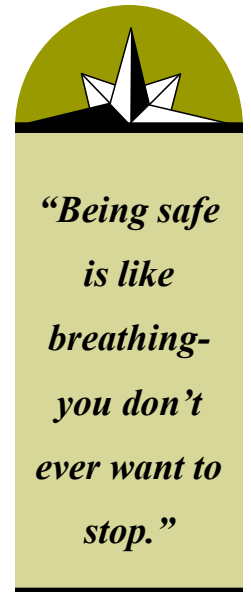
A training exercise performed at last year's SAC

It is that time again when we set aside a few hours each year to focus on several specific safety topics here at Wallops. This year the Safety Awareness Campaign (SAC) will be held on April 13th, 14th and 15th. Posters addressing event details and a schedule will be published and distributed across the site. This year we have two areas of special interest that we want to bring to your attention. First, we have retained an exceptional speaker who will be giving two presentations on April 13th. Please be in E-100 at 9:00 AM or 1:00 PM to get a good seat. Second, we will be presenting four sessions on changes that are coming to WFF regarding the safety program over the next year. Each session is one hour long and will be presented in Building E-100. Please check the schedule for the times.

The past year has been exciting and busy, and the next 12 months look to be even busier. It is important to take a couple of hours each year and focus on some topics associated with your safety and the safety of your co-workers. The information you will be exposed to at this event will allow you to take a step back and enjoy a slightly different perspective on your day to day tasks and better evaluate the risks we all have to measure in the course of our day. Please clear some time in your calendars to allow some time to participate in this very important event. It only happens once a year. Please take advantage of it.

Acronym Word Search

D	C	Z	H	D	Z	Q	M	R	R	Material Safety Data Sheet
X	R	F	J	R	E	S	T	I	A	Personal Protective Equipment
P	A	I	R	T	P	P	M	C	T	Code of Federal Regulations
V	W	B	F	T	F	E	P	T	U	Certified Industrial Hygienist
M	T	F	H	O	L	A	L	S	T	Lower Explosive Limit
Z	S	I	D	E	I	S	Q	E	P	Permissible Exposure Limit
T	C	D	T	J	Q	A	N	M	L	Short Term Exposure Limit
R	Z	S	S	L	K	N	B	X	J	Time Weighted Average
A	B	J	F	V	T	S	B	C	C	Qualitative Fitting Check
D	B	T	Q	Z	C	J	N	D	S	Quantitative Fitting Check
										Self Contained Breathing Apparatus
										Total Case Incidence Rate
										Days Away, Restricted and Transferred Rate



What Have You Done for Safety Lately??

Highlights from Code 614 Hydrospheric and Biospheric Sciences Laboratory
John Gerlach, Branch Head

This branch has an Open-Door policy for Safety issues and concerns. It has been stressed to all employees that no matter how insignificant a safety issue may seem, discussing it is appreciated and welcomed. As a result, employees feel comfortable reporting any safety hazard or concern to their supervisor. Many identified safety hazards that could have resulted in injury or worse have been avoided and corrected by employees identifying and discussing them. The results of some of these discussions were the installing of oxygen sensors in all of the Chemical Labs, identifying the lighting system problem in the N-159 hangar, and the enclosing of outside stairwells to most of our buildings. It is evident by their involvement that this branch has taken on the responsibility for safety that is needed by each of us. To ensure that our workplace is a safer place to be, let each of us adopt the attitude that "Safety is Our Individual Responsibility."

Answer Key from 2nd Issue Word Search

Q	F	C	B	V	P	P	P	A	Z
A	D	E	G	B	P	Y	M	I	A
N	S	C	M	A	C	P	S	O	S
Y	G	K	H	A	C	N	K	G	A
U	Y	V	E	A	A	G	N	S	N
O	S	M	A	L	M	F	I	A	U
R	E	S	S	A	P	N	E	H	I
G	J	L	I	A	Y	E	K	E	G
L	A	H	S	O	S	F	T	P	A
G	R	T	G	W	M	Y	X	A	Q

Safety & Environmental Newsletter



Piping plover are small buff and white colored shorebirds.

It's that time of year again...Piping Plover Season

Each year, in cooperation with the U.S. Fish and Wildlife Service, WFF closes portions of Wallops Island to recreational use to help protect nesting piping plovers, designated as a federally threatened species under the Endangered Species Act. Piping plovers begin to arrive at Wallops Island in mid to late March and leave by early fall. Two areas on Wallops Island are designated piping plover nesting areas. The first area, on the northern end of Wallops Island abuts the recreational use beach, separated by a cable barrier and signs. Vehicle and pedestrian access north of the cable is prohibited unless expressly authorized by the Environmental Office. This area closes on March 15 and reopens September 1. The second area is on the southern portion of Wallops Island and extends from Camera Stand Z-100 south to the Assawoman Island property line and is closed year round. Again, authorization from the Environmental Office is required to access this area. If piping plovers should happen to nest on the recreational beach, a wire enclosure will be placed around the nest and warning signs will be placed. Please be vigilant of the piping plover this time of year, use caution when transiting the vicinity, and avoid any nests.



An example of a wire enclosure around a piping plover nest.



Don't forget about Sea Turtles....

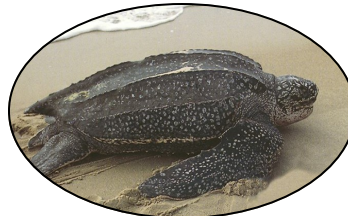
Sea turtles have been known to nest on Wallops Island. In 2008, a loggerhead sea turtle laid 170 eggs on the recreational beach in close proximity to the Off Road Vehicle beach access road. If sea turtles once again nest on the recreational beach, the nests will be roped off and warning signs erected. Please avoid these roped-off areas and do not drive between them and the ocean. During the actual hatching time period, flagging will extend from the nest to the surf zone and crossing these "turtleways" will be prohibited. Below are some turtles that may be found off of Wallops Island.



This harbor seal juvenile took a break to catch some rays on south Wallops Island before returning to sea.



Atlantic Green Sea Turtle



Leatherback Sea Turtle



Loggerhead Sea Turtle

Sign-up for the next Science on the Shore Event!

Up the Creek: Exploring Cockle Creek from Top to Bottom

Sponsored by The Marine Science Consortium Wednesday, April 21st, 8:30 a.m. - noon

Join marine educators from the Marine Science Consortium for a morning research cruise on Cockle Creek, a tidal creek located between the mainland and Chincoteague Island. Using scientific instruments and methods, participants will learn about water flow, salinity, clarity, and, of course, the critters that call Cockle Creek home. Participants will take part in trawling for organisms, collecting samples, and will discover just how amazing our marshes and creeks are. Close-toed shoes are required. Dress for sunny, breezy conditions. MSC will provide life jackets. Free for ages 9 and up.



Meet at the NASA boat basin, located just behind the NASA Visitor Center off Chincoteague Rd. Spaces are limited so register early. Contact the Marine Science Consortium at 757-824-5636.

To learn more about [Science on the Shore](#) please visit:

<http://msconsortium.org/#/science-on-the-shore/4537206296>



The Wallops Environmental Team cordially invites you to come celebrate the 40th Anniversary of Earth Day on April 22nd, 2010.